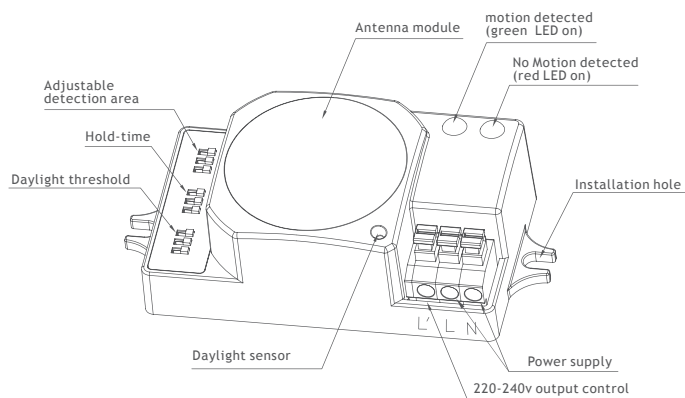
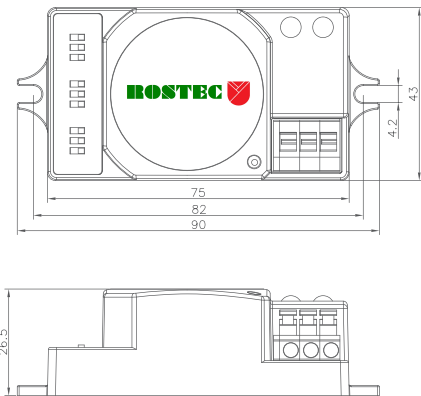


# Economy version

Model: RS008S  
RS008S/M



Model: RS008S  
RS008S/M

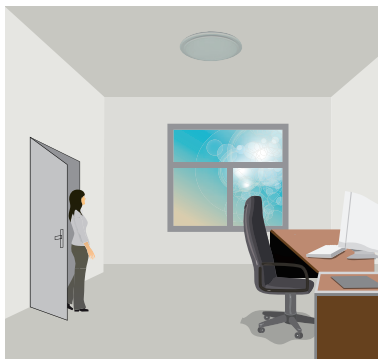


Mechanical structure

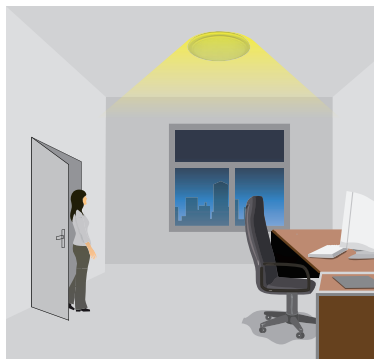
## Function and options

### 1 On-off Function

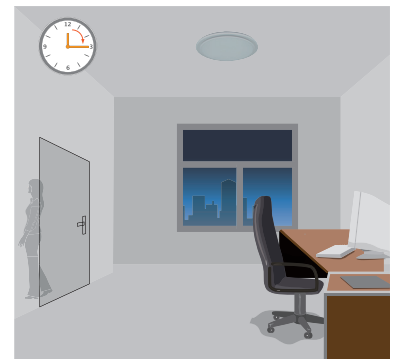
This sensor is a motion switch, turn on the light on detection of people movement, and turn off after a pre-selected holdtime when there is no people around. A daylight sensor is also built-in to switch off the light when there is sufficient natural light.



With sufficient natural light, the light does not switch on when presence detected

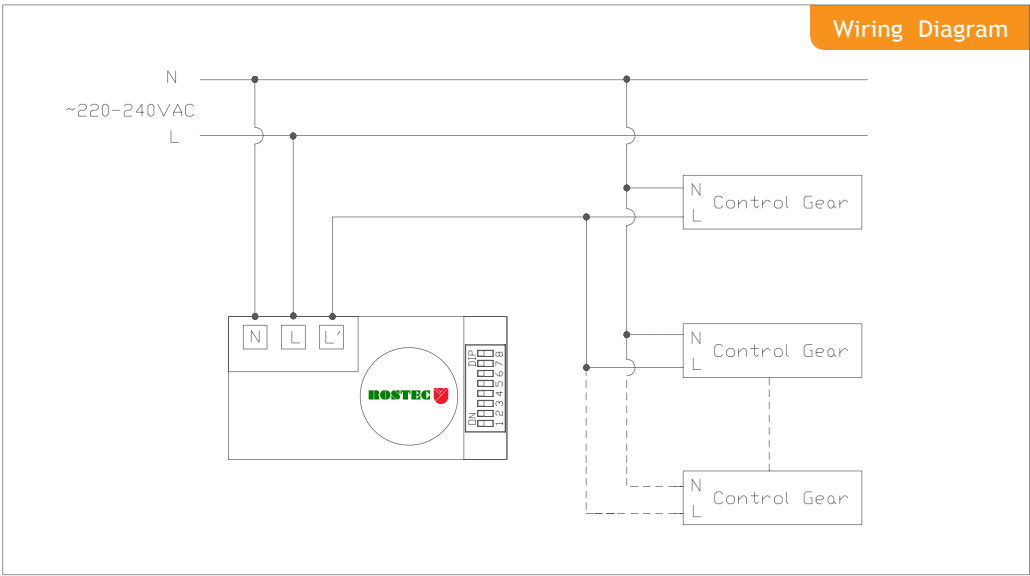


With insufficient natural light, the sensor switches on the light automatically when person enters the room

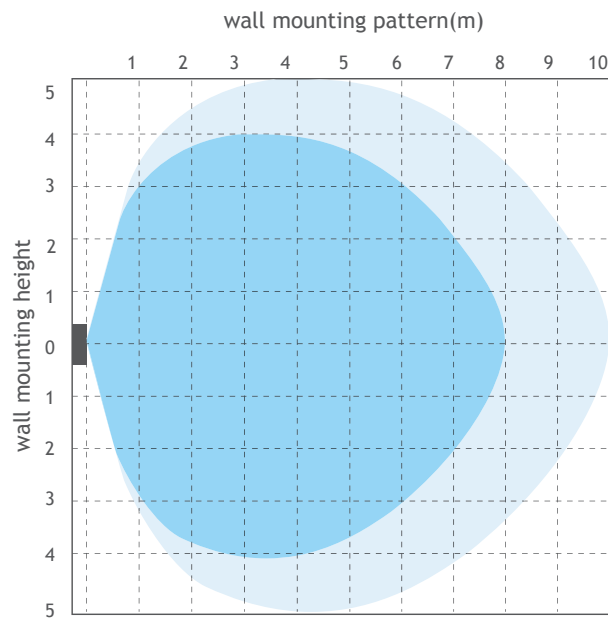
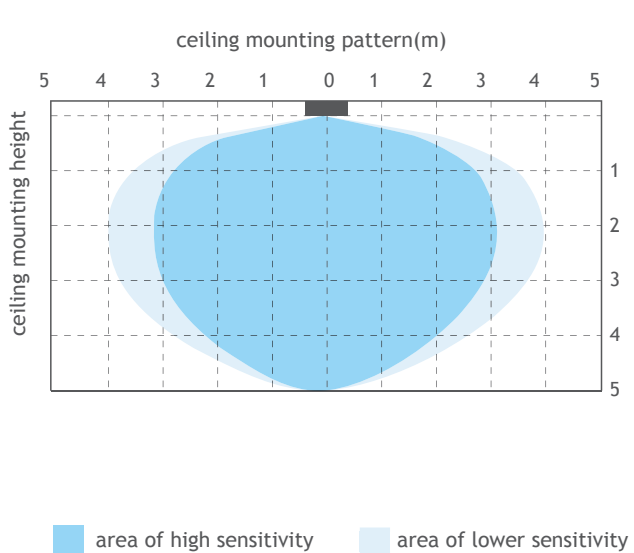


After the hold time, then switch off automatically when no movement is detected.

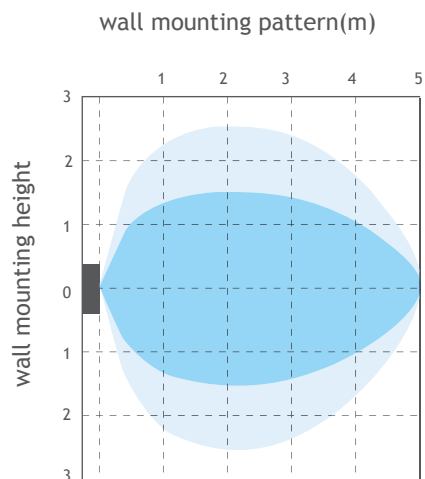
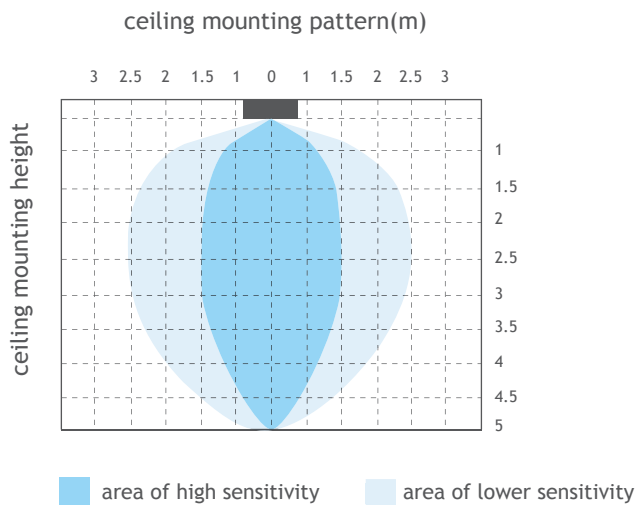
Wiring Diagram



## RS008S Detection Pattern



## RS008S/M Detection Pattern



# Settings

## 1 detection area

Detection area can be reduced by selecting the combination on the DIP switches to fit precisely for each specific application.

	1	2	3	
I	●	●	●	100%
II	○	●	●	75%
III	●	○	●	50%
IV	●	●	○	30%
V	○	○	○	10%

I - maximum range 100%  
 II - 75%  
 III - 50%  
 IV - 30%  
 V - 10%

## 2 hold-time

Hold-time means the time period you would like to keep the lamp on 100% after the person has left the detection area.

	1	2	3	
I	●	●	●	5s
II	○	●	●	30s
III	●	○	●	180s
IV	○	○	●	300s
V	●	●	○	15min
VI	○	○	○	25min

I - Walk test mode 5s  
 II - 30s  
 III - 180s  
 IV - 300s  
 V - 15 minutes  
 VI - 25 minutes

## 3 daylight sensor

The daylight threshold can be set on DIP switches, to fit for particular application.

	1	2	3	
I	●	●	●	2 Lux
II	○	●	●	5 Lux
III	●	○	●	20 Lux
IV	○	●	○	30 Lux
V	○	○	○	Disable

I - 2 lux darkness operation only  
 II - 5 lux darkness operation only  
 III - 20 lux twilight operation  
 IV - 30 lux twilight operation  
 V - \*daylight, daylight sensor disabled

“daylight” : The lamp works always,even during daylight.  
 “twilight” : The lamp works only in twilight and darkness.  
 “darkness”: The lamp works only in darkness.

## Technical Data

Operating voltage:	RS008S, RS008S/M--220-240V
Switched power:	RS008S, RS008S/M--400w
Standby power:	0.6w (standby), 1.2w (operation)
Detection area	10 / 30 / 50 / 75 / 100% , can be customized
Hold time	5s/30s/180s/300s/15min/25min, can be customized
Daylight threshold	2--30lux daylight / twilight / darkness , can be customized
Sensor principle	microwave motion detector
Microwave frequency	5.8 GHz +/- 75 MHz
Microwave power	<1mw
Detection range	RS008S,Max. ( Φ x H ): 8m x 5m RS008S/M,Max.( Φ X H):3m x 3m
Detection angle	30--150 °
Mounting height:	Max 5m RS008S, max 3m RS008S/M.
Operating temperature:	-10℃ ~ +60℃
IP rating:	IP20, IP65(mounting in Rostec special box)